

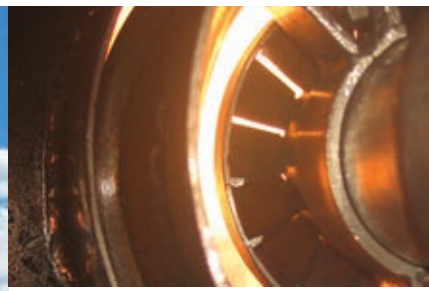
# INERT GAS GENERATOR



The inert gas generator is used to produce an inert gas with an oxygen content (by volume) of not more than 5% (on the inert gas main), which is filled into the upper space of the oil tank to reduce the oxygen content of the oil tank atmosphere, so as to make the oxygen content of the oil tank atmosphere not more than 8%, and maintain a positive pressure state; The atmosphere in the oil tank can not support the degree of combustion, prevent the danger of fire and explosion in the oil tank, and improve the safety of the tanker.

Feather:

- Air to fuel ratio regulating mechanism adopts "load tracking technology", to realize the function of automatic adjustment of combustion load according to the need, in the full range of work, to ensure the air to fuel ratio, improve the utilization rate of fuel.
- Combustion head using swirl plate to achieve "strong swirl flame stability technology", improve the effect of high pressure combustion chamber flame stability, so that the inert gas generator in the full load range without demignification, tempering phenomenon, full combustion.
- The oxygen content in inert gas can be automatically adjusted by real-time detection and control of oxygen content, which ensures the safety and reliability of the system.



### Performance data

Turn down ratio: 1:4

O2 content: 2~4% by volume

CO2 content: max. 14% by volume

CO content: max. 500ppm

Sulfide content: max. 50ppm

Discharge pressure: 0.15 bar

Inert gas temperature: max. 6°C above cooling water temperature, less than 40°C

Capacity Nm3/h	Fan L × W × H(mm)	IGG L × W × H(mm)	DWS D × H(mm)	PVB D × H (mm)
500	882×731×1047	3500×600×1525	600×1730	450×2568
2500	1606×1080×1257	4255×900×1925	900×1730	450×2568
5000	1850×1158×1257	5100×1100×2215	1275×1730	508×2568
7500	2075×1236×1384	6500×1200×2585	1550×1730	762×2568
10000	2200×1326×1560	7500×1400×2950	1800×1730	813×2568

